



Clements estate agents



Linnet Road, Apsley, Hemel Hempstead, HP3 0FP

£1,500 PCM

Clements Estate Agents are delighted to market this stunning TWO bedroom flat. Located on the ever-popular Manor Estate, this immaculate property is not one to be missed. Comprising of large, open-plan living space, two good size bedrooms and modern family bathroom. For added convenience, allocated parking is included, as well as additional parking close by, for those with multiple vehicles. Presented in perfect condition, this never let before property is available to move into NOW. Call us to avoid disappointment!

Extenal

Kitchen 11'7" x 6'7" (3.53m x 2.01m)



Bathroom 7'5" x 6'7" (2.26m x 2.01m)



Lounge 15'2" x 14'6" (4.62m x 4.42m)



Bedroom 2 10'4" x 9'9" (3.15m x 2.97m)



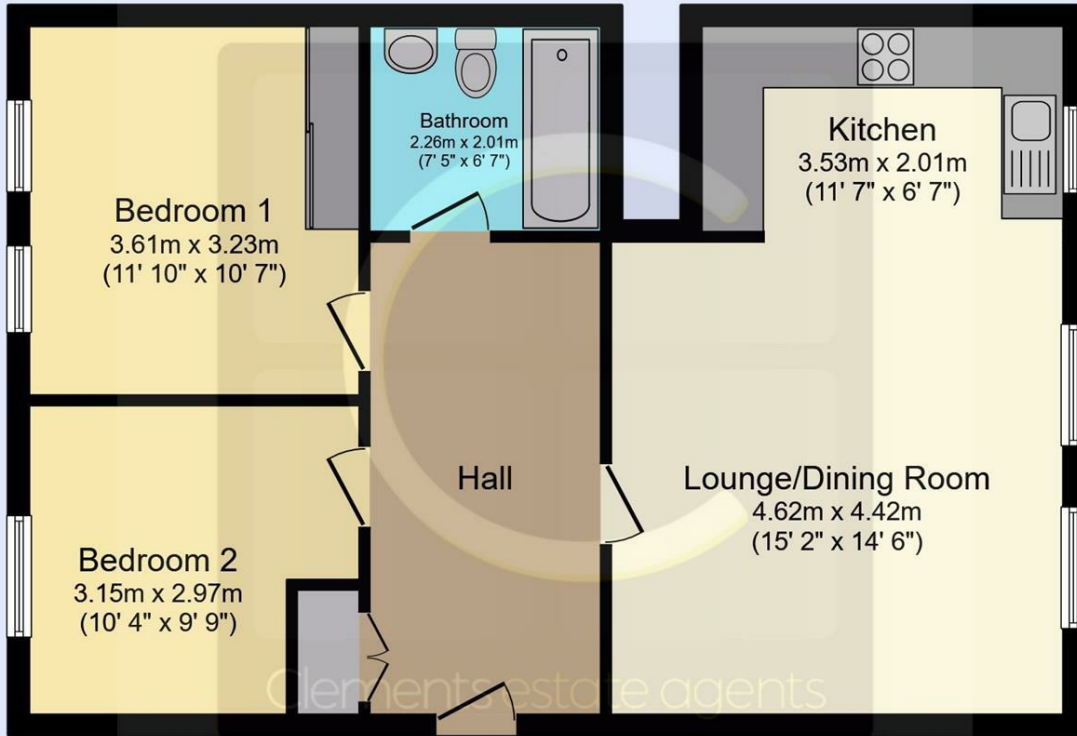
Bedroom 1 11'10" x 10'7" (3.61 x 3.23)



Parking



Floor Plan

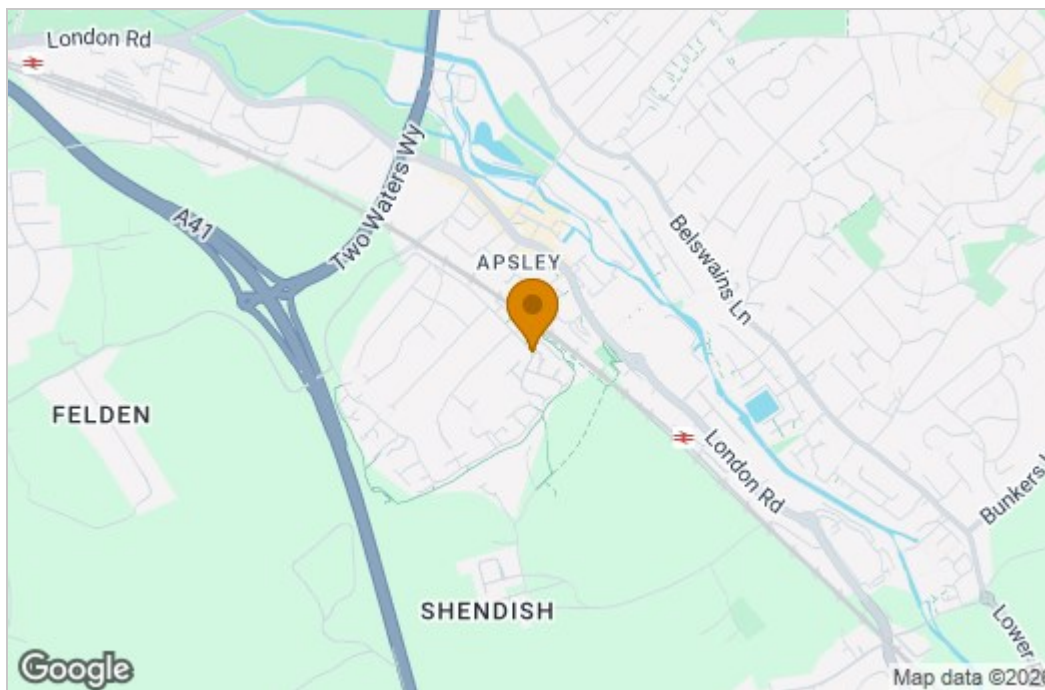


Floor Plan

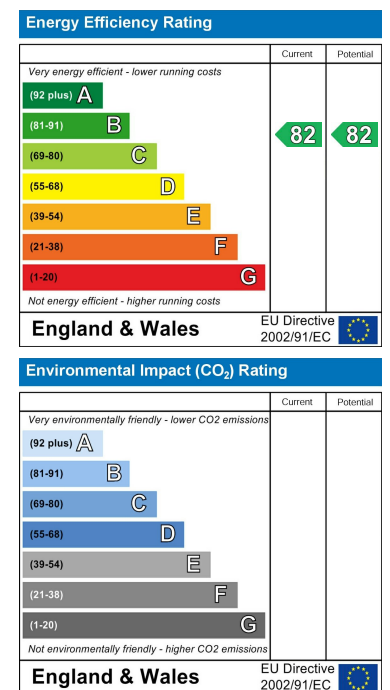
This floor plan is for illustrative purposes only. It is not drawn to scale. Any measurements, floor areas (including any total floor area), openings and orientations are approximate. No details are guaranteed, they cannot be relied upon for any purpose and do not form any part of any agreement. No liability is taken for any error, omission or misstatement. A party must rely upon its own inspection(s). Powered by www.Propertybox.io



Area Map



Energy Efficiency Graph



These particulars, whilst believed to be accurate are set out as a general outline only for guidance and do not constitute any part of an offer or contract. Intending purchasers should not rely on them as statements of representation of fact, but must satisfy themselves by inspection or otherwise as to their accuracy. No person in this firm's employment has the authority to make or give any representation or warranty in respect of the property.